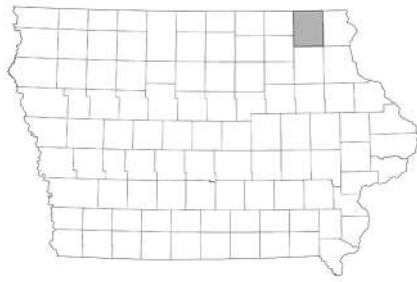


# Data for Decision Makers



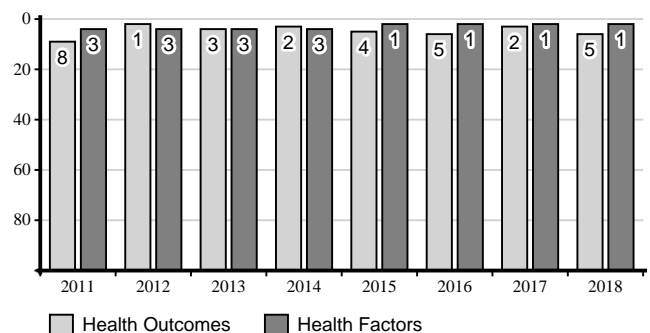
## Winneshiek County Health Profile

report created: 07/08/2018

### Health Rankings

A wide range of health data and information can help residents, health providers, and policy makers understand the health situations and health needs of county residents. This health Data for Decision Makers provides basic and summary health data and information at the county level. It can be a starting point for discussions on health issues, a guide for health needs, and help shape future programming and policies. It is updated annually to provide the most current set of indicators and can be used to compare across counties, regions, and the state.

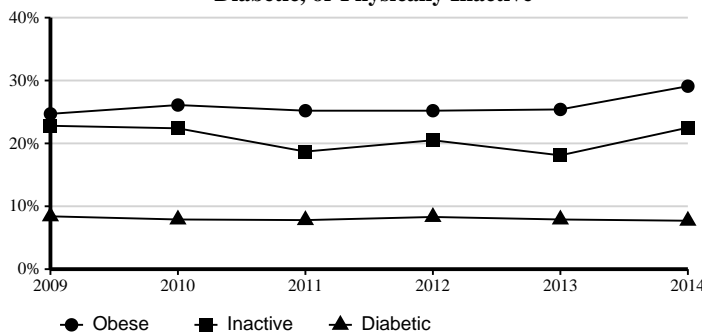
County Health Rankings by Report Year  
Health Outcomes and Health Factors<sup>1</sup>



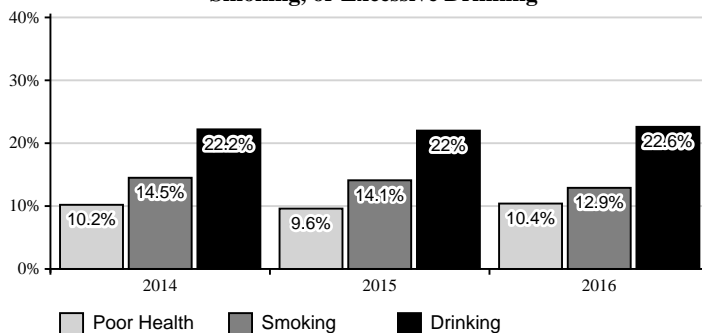
Counties are ranked against each other. Higher rankings (small numbers) are better than lower rankings (higher numbers).

Health Data <sup>1,2,3</sup>	County	State
Health Outcomes Rank (2018)	5/99	NA
Health Factors Rank (2018)	1/99	NA
Obesity (2014)	29.1%	31.8%
Diabetic (2014)	7.7%	9.5%
Inactivity (2014)	22.5%	24.7%
Poor Health (2016)	10.4%	13.1%
Smoking (2016)	12.9%	16.7%
Excessive Drinking (2016)	22.6%	22.1%

Estimated County Percent Obese, Diabetic, or Physically Inactive<sup>2</sup>



Estimated County Percent Poor/Fair Health, Smoking, or Excessive Drinking<sup>3</sup>



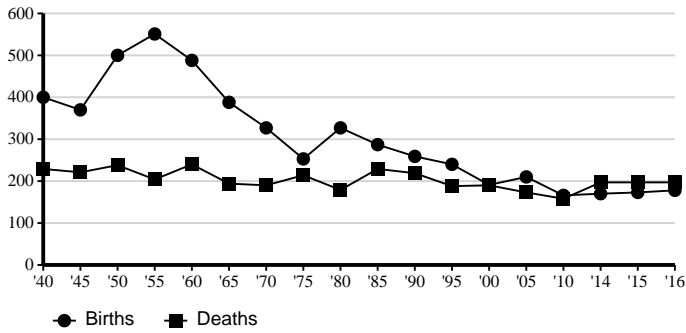
### Contacts:

**Regional Director**  
 Kraig Tweed  
 325 Washington  
 Decorah, IA 52101  
 ktweed@iastate.edu  
 563-382-2942

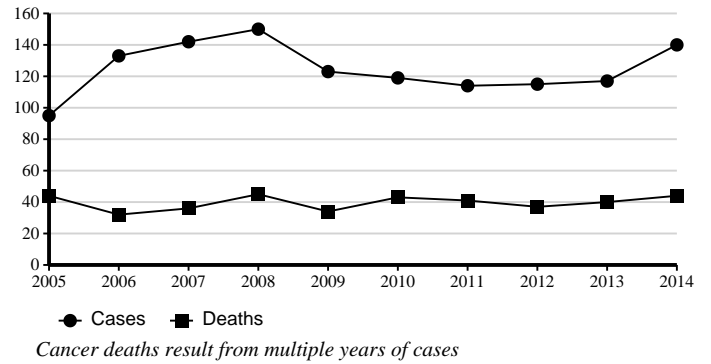
**County Office**  
 Francesca Reyes  
 325 Washington St  
 Decorah, IA 52101  
 freyes1@iastate.edu  
 563-382-2949

<http://indicators.extension.iastate.edu>

### Number of County Births and Deaths<sup>4</sup>



### Number of County Cancer Cases and Cancer Deaths<sup>5</sup>



### Estimated Hospitalizations, Deaths, and Hospitalization Charges from Falls, 2010-2014<sup>6</sup>

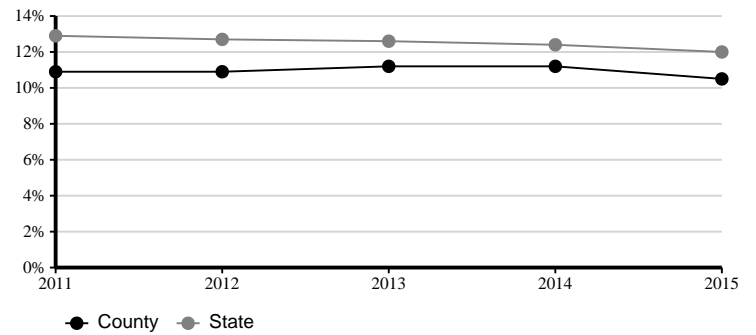
	County	State
Hospitalizations	211	54,447
All Ages, Rate/1,000	2.0	3.6
50-64, Rate/1,000	1.1	2.7
65+, Rate/1,000	9.6	17.2
Deaths from Falls	8	2,323
All Ages, Rate/100,000	7.6	15.1
50-64, Rate/100,000	0.0	6.5
65+, Rate/100,000	38.5	85.9
Hospitalization Charges	\$3,145,777	\$1,625,126,573
Average Charges	\$14,909	\$29,848

The 2010-2014 year range represents a 5-year sum of data

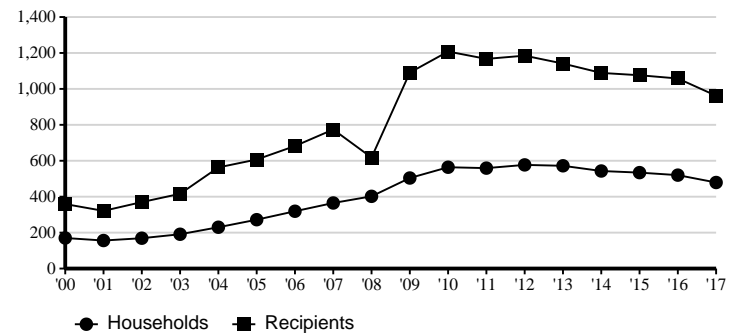
### Primary Care Physicians, Dentists, and Mental Health Providers<sup>8</sup>

	County Providers	County Pop per Provider	State Providers	State Pop per Provider
<b>Primary Physicians</b>				
2015	21	986	2,292	1,363
2014	20	1,038	2,303	1,349
2013	16	1,312	2,287	1,351
2012	15	1,404	2,236	1,375
<b>Dentists</b>				
2016	13	1,582	2,008	1,561
2015	13	1,593	1,956	1,597
2014	14	1,483	1,907	1,629
2013	13	1,615	1,851	1,670
<b>Mental Health</b>				
2017	46	447	4,146	756
2016	43	482	3,812	819

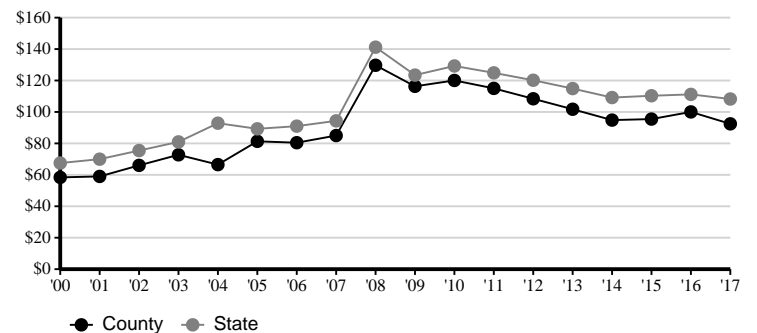
### Percent of Population Food Insecure<sup>7</sup>



### Average Monthly Number of County Households and Recipients Receiving Food Stamps<sup>9</sup>



### Average Food Stamp Benefits Paid Per Recipient Per Month<sup>9</sup>



## Disability Characteristics, 2012-2016<sup>10</sup>

	County		State	
	Estimate	MOE*	Estimate	MOE*
<b>Total Population</b>	20,514	+/-114	3,062,954	+/-311
<b>With a Disability</b>	8.6%	+/-1.0%	11.6%	+/-0.1%
Hearing	2.5%	+/-0.5%	3.7%	+/-0.1%
Vision	1.1%	+/-0.3%	1.8%	+/-0.1%
Cognitive	3.2%	+/-0.7%	4.5%	+/-0.1%
Ambulatory	4.0%	+/-0.7%	5.9%	+/-0.1%
Self care	1.7%	+/-0.5%	2.1%	+/-0.1%
Independent Living	2.8%	+/-0.5%	4.6%	+/-0.1%
<b>Ages 18-64</b>	13,070	+/-143	1,869,985	+/-1,410
<b>With a Disability</b>	5.9%	NA	9.4%	NA
Hearing	1.2%	+/-0.4%	2.1%	+/-0.1%
Vision	1.0%	+/-0.4%	1.4%	+/-0.1%
Cognitive	2.6%	+/-0.8%	4.0%	+/-0.1%
Ambulatory	2.2%	+/-0.7%	4.2%	+/-0.1%
Self care	1.0%	+/-0.5%	1.5%	+/-0.1%
Independent Living	1.5%	+/-0.5%	3.0%	+/-0.1%
<b>Ages 65-74</b>	1,830	+/-29	256,454	+/-541
<b>With a Disability</b>	11.6%	+/-3.4%	22.5%	+/-0.4%
Hearing	5.1%	+/-2.2%	9.6%	+/-0.3%
Vision	0.2%	+/-0.3%	2.9%	+/-0.2%
Cognitive	1.8%	+/-1.3%	4.0%	+/-0.2%
Ambulatory	6.1%	+/-2.5%	12.7%	+/-0.3%
Self care	1.9%	+/-1.9%	3.4%	+/-0.2%
Independent Living	2.2%	+/-1.4%	5.6%	+/-0.2%
<b>Ages 75 and above</b>	1,711	+/-105	211,169	+/-537
<b>With a Disability</b>	32.2%	+/-5.7%	44.2%	+/-0.5%
Hearing	13.8%	+/-3.6%	21.4%	+/-0.5%
Vision	4.0%	+/-1.9%	7.6%	+/-0.3%
Cognitive	3.4%	+/-1.7%	9.7%	+/-0.3%
Ambulatory	20.6%	+/-5.1%	27.0%	+/-0.5%
Self care	7.0%	+/-3.3%	9.5%	+/-0.3%
Independent Living	13.4%	+/-4.2%	18.2%	+/-0.5%

## Educational Attainment, 2012-2016<sup>10</sup>

	County		State	
	Estimate	MOE*	Estimate	MOE*
Population 25 and older	13,571	+/-75	2,058,840	+/-836
High School Graduate or Higher	94.4%	+/-0.9%	91.7%	+/-0.1%
Bachelor's Degree or Higher	27.6%	+/-1.7%	27.2%	+/-0.2%

## Number of Substance Abuse Treatment Admissions by Type, 2016<sup>11</sup>

	County	State
Total Admissions	113	24,501
Alcohol	69	8,919
Methamphetamine	**	5,716
Marijuana	35	6,355
Opioids	**	2,328
Cocaine	**	1,183

\*\*Data for counties with small number of cases are suppressed for confidentiality purposes

## Number of Hospital and Nursing Facilities and Beds, 2016<sup>11</sup>

	County	State
Hospitals	1	121
Hospital Beds	25	11,620
Nursing Facilities	3	413
Nursing Facility Beds	201	29,660

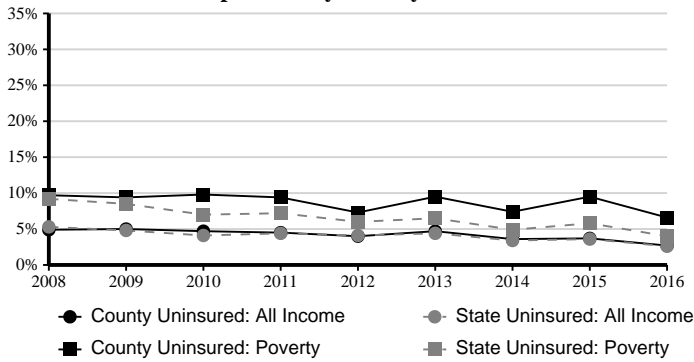
## Percentage of Population by Age<sup>10</sup>

Age Groups	County		State	
	2000	2010	2000	2010
17 or younger	23.0%	20.4%	25.1%	23.9%
0 - 4	5.1%	5.1%	6.4%	6.6%
5 - 9	6.1%	5.5%	6.9%	6.6%
10 - 14	7.1%	5.8%	7.2%	6.6%
15 - 17	4.7%	4.0%	4.6%	4.1%
18 - 24	16.7%	16.7%	10.2%	10.0%
25 - 44	24.2%	19.0%	27.6%	24.5%
45 - 64	20.4%	27.0%	22.2%	26.7%
65 or older	15.7%	16.8%	14.9%	14.9%
65 - 84	13.2%	13.8%	12.7%	12.4%
85 or older	2.5%	3.0%	2.2%	2.5%
Median Age (years) <sup>a</sup>	35.7	39.4	36.6	38.1
Age Dependency <sup>b</sup>	63.1	59.3	66.7	63.4
Old-Age	25.6	26.8	24.8	24.3
Child	37.5	32.5	41.8	39.1

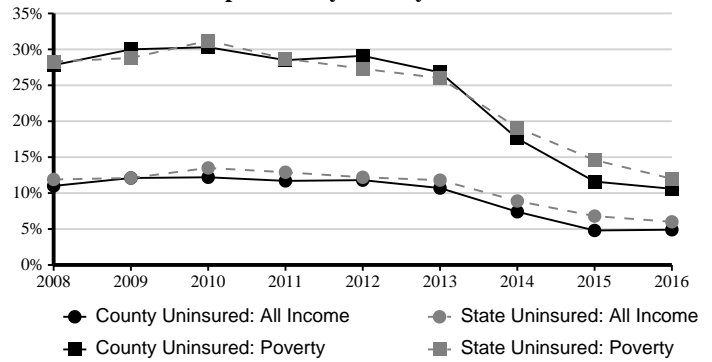
<sup>b</sup>Age Dependency Ratio

\*MOE = the margin of error for American Community Survey estimates<sup>5</sup> which is a numerical value that when added to or subtracted from the point estimate value gives the range of a 90% confidence interval around the estimate.

**Ages 0-18 Percent Health Uninsured Population by Poverty Level<sup>3</sup>**



**Ages 18-64 Percent Health Uninsured Population by Poverty Level<sup>13</sup>**

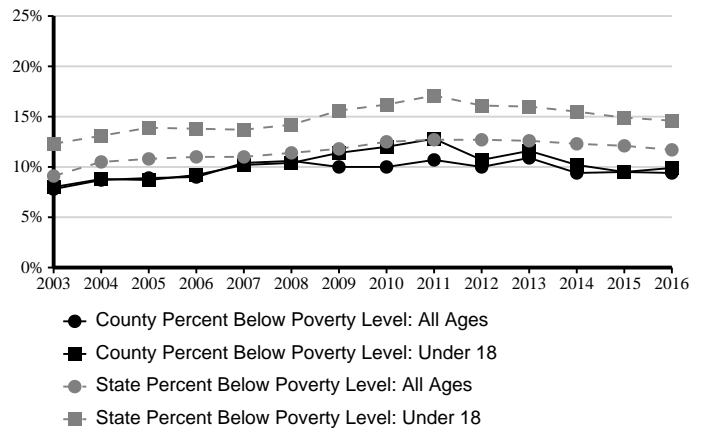


**Median<sup>a</sup> Household and Per Capita Income, 2012-2016<sup>10</sup>**

	County		State	
	Estimate	MOE*	Estimate	MOE*
Total Households	8,205	+/- 207	1,242,641	+/- 3,378
Median Household Income	\$57,009	+/- \$2,457	\$54,570	+/- \$300
Median Family Income	\$71,560	+/- \$2,749	\$69,419	+/- \$424
Per Capita Income	\$27,240	+/- \$969	\$28,872	+/- \$162

\*MOE = the margin of error for American Community Survey estimates<sup>5</sup> which is a numerical value that when added to or subtracted from the point estimate value gives the range of a 90% confidence interval around the estimate.

**Percent Below Poverty Level by Age<sup>14</sup>**



The Iowa State University (ISU) Translational Research Network (U-TuRN) was established to facilitate the adoption, implementation and sustainability of evidence-based programming in community settings. We are working to build a state-wide support network that will help to promote more effective, team-based approaches to community health issues and needs. More information at <https://research.hs.iastate.edu/uturn/>. Contact: [uturn@iastate.edu](mailto:uturn@iastate.edu)



**Information in this document was derived from:**

<sup>1</sup> *County Health Rankings and Roadmaps: Building a Culture of Health, County by County*. An annual report, ranking, and data set of health indicators for counties produced in a collaboration between the Robert Wood Johnson Foundation and the University of Wisconsin Population Health Institute. Health outcomes in the County Health Rankings represent measures of how long people live and how healthy people feel. Health factors in the County Health Rankings include health behaviors, clinical care, social and economic factors, and the physical environment.  
<sup>2</sup> Retrieved from *County Health Rankings and Roadmaps*.<sup>1</sup> Original source cited: CDC Diabetes Interactive Atlas.  
<sup>3</sup> Retrieved from *County Health Rankings and Roadmaps*.<sup>1</sup> Original source cited: CDC Behavioral Risk Factor Surveillance System.  
<sup>4</sup> *Vital Statistics of Iowa*, Iowa Department of Public Health.  
<sup>5</sup> Iowa Cancer Registry.  
<sup>6</sup> *Falls in Iowa: County Deaths and Hospitalizations*, Iowa Department of Public Health.  
<sup>7</sup> Retrieved from *County Health Rankings and Roadmaps*.<sup>1</sup> Original source cited: Map the Meal Gap.  
<sup>8</sup> Retrieved from *County Health Rankings and Roadmaps*.<sup>1</sup> Original source cited: Area Health Resources Files and Center for Medicare and Medicaid Services.  
<sup>9</sup> Retrieved from State Data Center of Iowa. Original source cited: Iowa Department of Human Services.

<sup>10</sup> U.S. Census Bureau, American Community Survey, 5-year estimates, 2012-2016.  
<sup>11</sup> Iowa Health Fact Book, The University of Iowa College of Public Health and The Iowa Department of Public Health.  
<sup>12</sup> U.S. Census Bureau, Decennial Census 2010 and Population Estimates Program.  
<sup>13</sup> U.S. Census Bureau, Small Area Health Insurance Estimates.  
<sup>14</sup> U.S. Census Bureau, Small Area Income and Poverty Estimates.

<sup>a</sup> Median is the middle value of a distribution.  
<sup>b</sup> The age dependency ratio compares, by age, those typically not in the labor force with those who typically are in the labor force. Old Age dependency is persons 65+ per 100 persons age 18-64. Child dependency is persons under age 18 per 100 persons age 18-64. The total age dependency ratio is persons under age 18 plus persons 65 or older per 100 persons age 18-64.

**This series was prepared by:**

Sandra Burke, Assistant Scientist III & Extension Specialist  
 Bailey Hanson, Systems Analyst II & Extension Specialist  
 Christopher J. Seeger, Professor & Extension Specialist

Iowa State University Extension and Outreach does not discriminate on the basis of age, disability, ethnicity, gender identity, genetic information, marital status, national origin, pregnancy, race, religion, sex, sexual orientation, socioeconomic status, or status as a U.S. veteran. Direct inquiries to the Diversity Officer, 515-294-1482, [extdiversity@iastate.edu](mailto:extdiversity@iastate.edu).